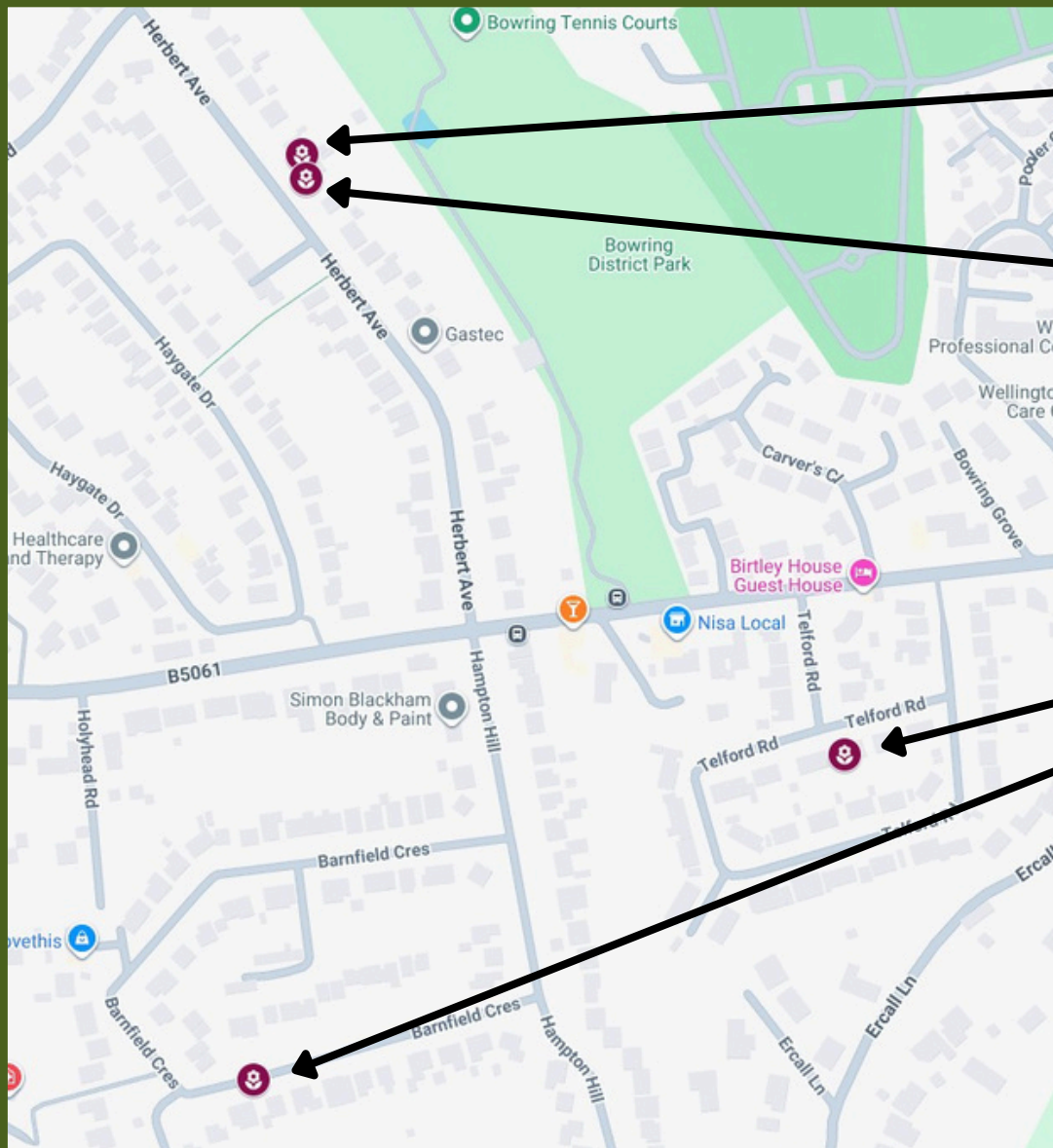


Wellington Open Gardens



Wellington
Tel 01952 245 577



15 Herbert Ave, TF1 2BT

A modern, and sophisticated garden makes use of every available space, to show how outdoor living should be done! Thanks to the owner's expert craftsmanship this garden has its own outdoor kitchen, sunken suntrap and a "man cave" everyone will be jealous of!

[///slicer.reclusive.cage](http://slicer.reclusive.cage)

17 Herbert Ave, TF1 2BT

A long garden is sectioned into beautiful "rooms", creating areas of interest that are planted to delight!

[///earmarked.acclaimed.badge](http://earmarked.acclaimed.badge)

56 Telford Rd, TF1 2EN

A lovingly planted garden is a wonderful example of what is achievable in a smaller space. A beautiful path leads you around a jam packed garden. Due to it's size, the owner has asked that only 6 people at a time visit.

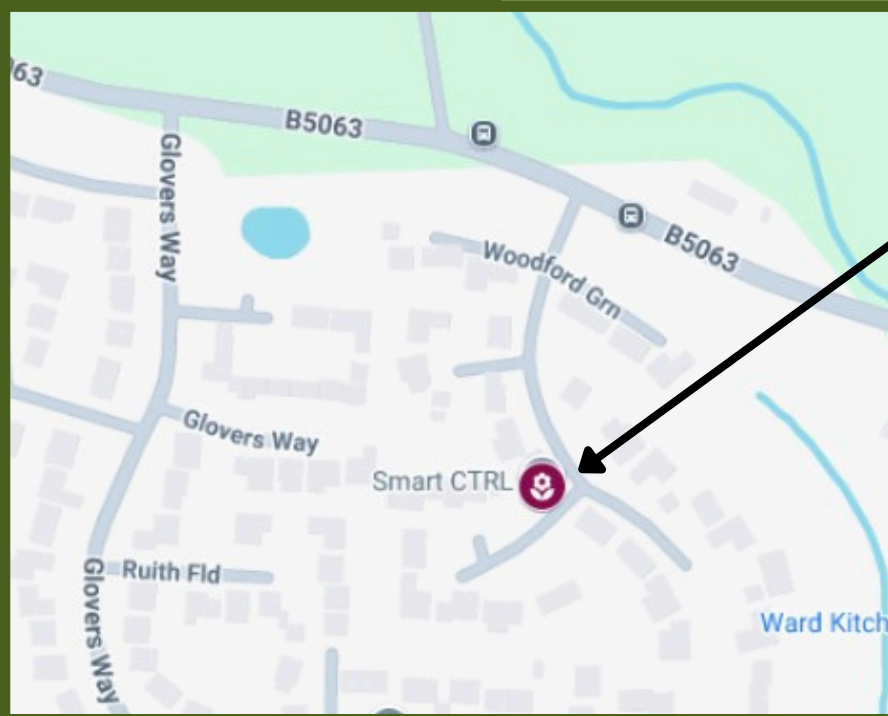
[///actual.spearhead.hubcaps](http://actual.spearhead.hubcaps)

62 Barnfield Crescent, TF1 2EX

Set on a sloping site, this beautifully planted garden uses the natural landscape to create interest throughout. Thoughtful planting and characterful details reflect the owner's personality, creating a garden we hope you will enjoy exploring.

[///proves.acted.atom](http://proves.acted.atom)



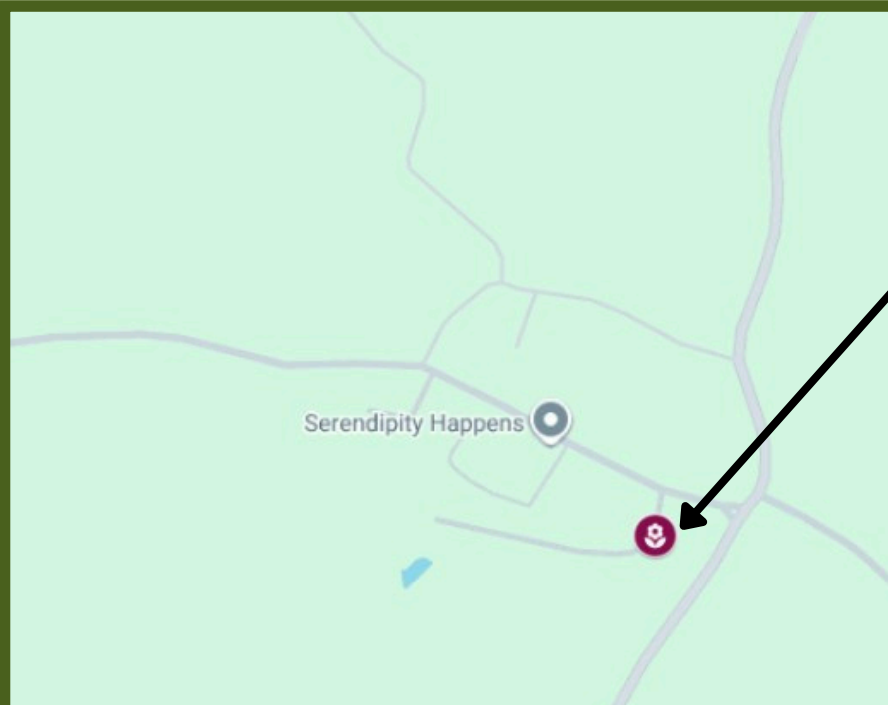


26 Woodford Green, Bratton, Telford, TF5 0NS

Garden has been completely replanted except for hedges and about 10 original trees and shrubs over last 9 years, several plants transported from previous house in Norfolk including an Eriobotrya japonica - Lowquat family. Several more unusual shrubs including tender ones from Australia and New Zealand.

Now planted for almost year round colour and scent, about 500 trees, bulbs, shrubs and perennials including 45 Hostas, 30 plus Acers, 12 Camellias, 11 palms x3 different types, planted indeep borders and island beds. Poor free draining sandy soil with some areas with remains of farmyard foundations make planting difficult.

///notch.acted.sunblock

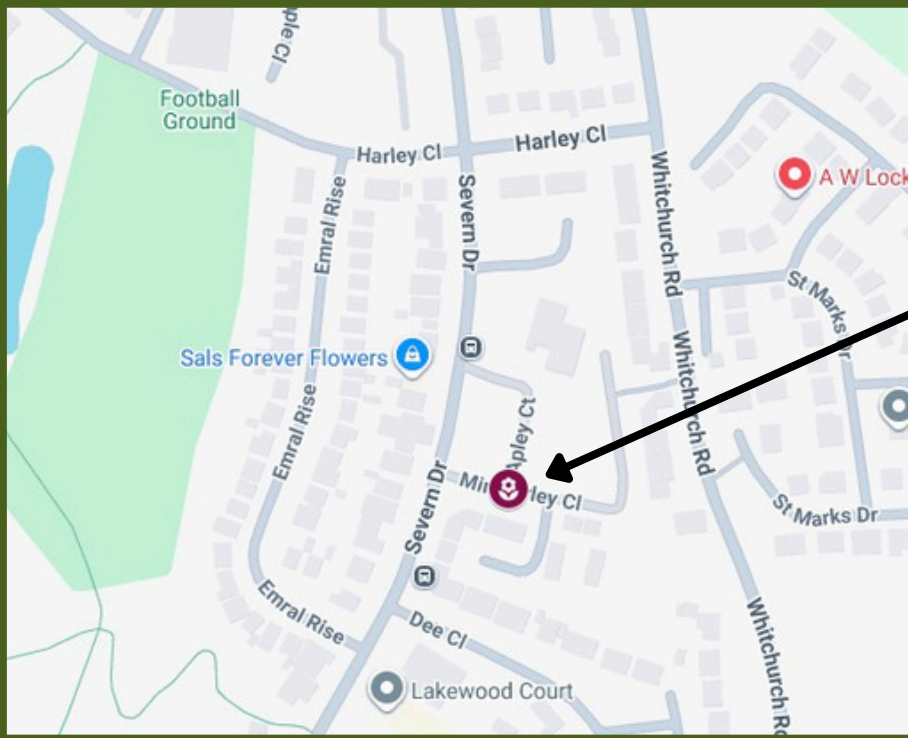


Upper Farm House, Rushton, TF6 5AG

Farmhouse Garden with views of the Wrekin and the Stretton Hills. Comprising several garden 'rooms' connected by gravelled walkways interspersed with ample seating opportunities. Unusual features inc a raised scree terrace, a rose pergola and bed with 40 varieties of English shrub roses, a two sided herbaceous walk, an elevated viewing deck, a cactus house and self-sufficient allotment beds.

Garden surrounds a 17th century grade 2 listed Farmhouse of interesting construction including 1675 dated chimney stack. There is ample field parking. Toilet facilities are available on request. Rain shelter under awning for unexpected showers.

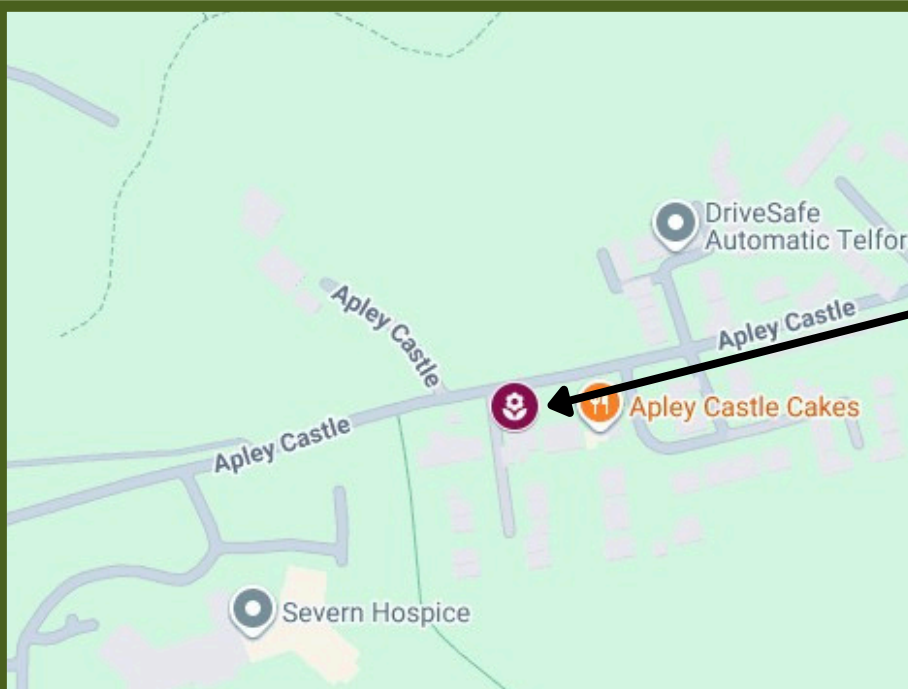
///duties.cheer.glossed



7 Minsterley Close, Dothill, TF1 3BF

Who said you need a big garden to grow a wide variety of plants?! This well-appointed, triangle shaped garden makes use of every available space to pack in colour and range, utilising vertical planting as well as old milk cartons to prove you can grow anything, anywhere!

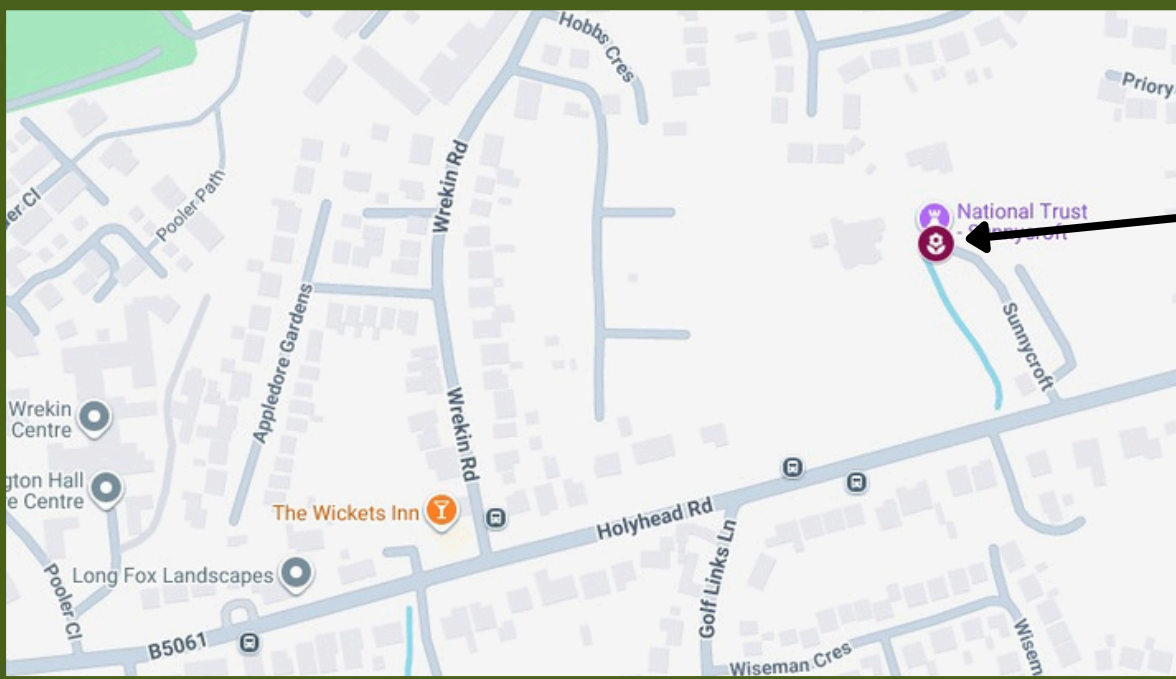
[///closets.prowl.resist](http://closets.prowl.resist)



29 Apley Castle, Apley, TF1 6RH

Tucked away in what once was the Old Apley Castle, this wonderfully appointed garden combines the tranquility of the Apley Woods with the owners keen eye for beauty.

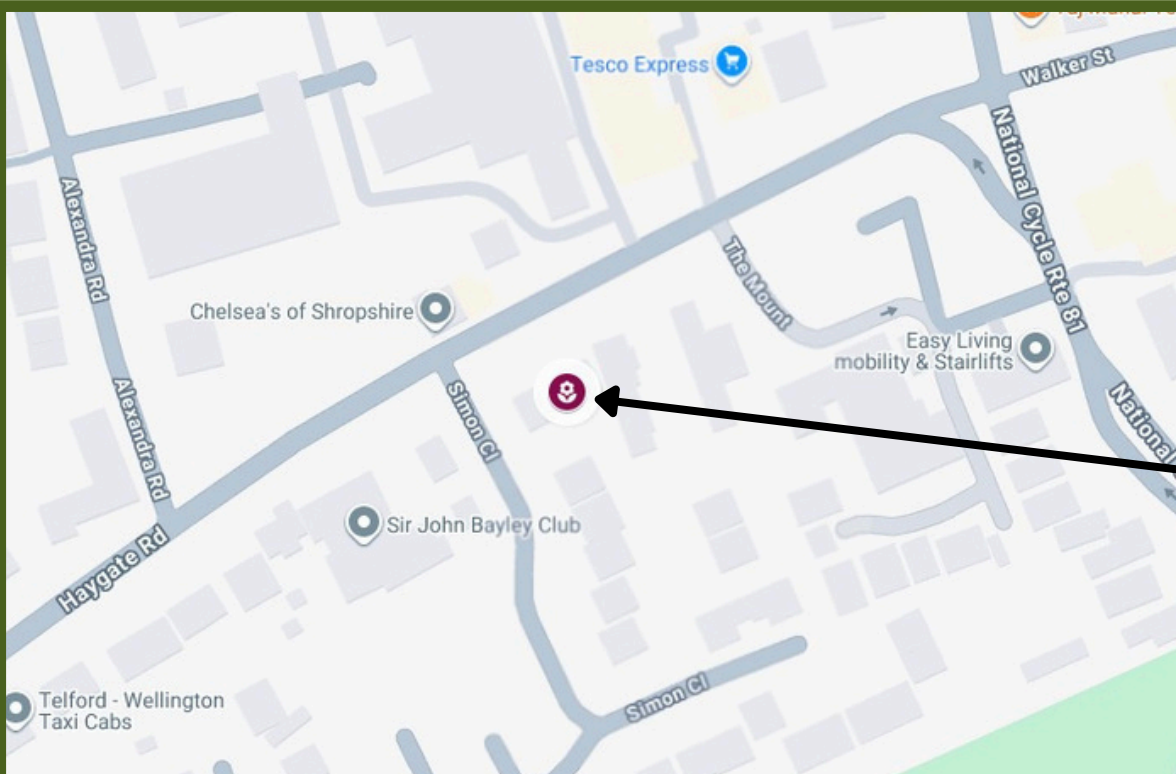
[///lashed.extent.snored](http://lashed.extent.snored)



Sunnycroft Holyhead Rd, Wellington, TF1 2DR

The National Trust's Sunnycroft is a rare Victorian suburban villa and mini-estate with five acres of garden.

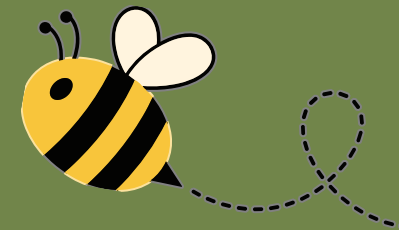
[///schools.decoding.woods](http://schools.decoding.woods)



11 Haygate Road, Wellington, TF1 1QX

Immaculate, well maintained front garden featuring a lush, neatly trimmed lawn.

[///skyrocket.bounding.asleep](http://skyrocket.bounding.asleep)



All locations

- 1:** 15 and 17 Herbert Avenue, TF1 2BT
- 2:** 56 Telford Rd, TF1 2EN
- 3:** 62 Barnfield Crescent, TF1 2EX
- 4:** 26 Woodford Green, Bratton, Telford, TF5 0NS
- 5:** Upper Farm House, Rushton, TF6 5AG
- 6:** 7 Minsterley Close, Dothill, TF1 3BF
- 7:** 29 Apley Castle, Apley, TF1 6RH
- 8:** Sunnycroft Holyhead Rd, Wellington, TF1 2DR
- 9:** 11 Haygate Road, Wellington, TF1 1QX

